

STATE OF UTAH

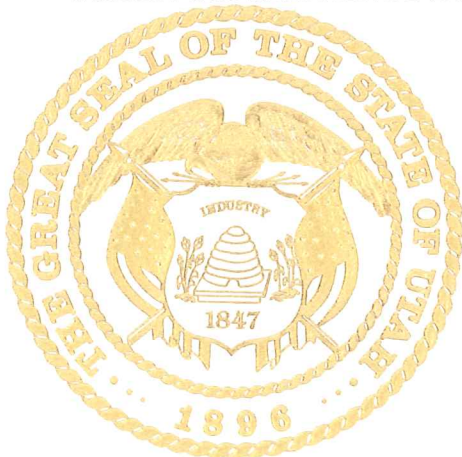


OFFICE OF THE LIEUTENANT GOVERNOR

CERTIFICATE OF ANNEXATION

I, GARY R. HERBERT, LIEUTENANT GOVERNOR OF THE STATE OF UTAH, HEREBY CERTIFY THAT there has been filed in my office a notice of annexation from the GRAND COUNTY WATER CONSERVANCY DISTRICT, dated July 31st, 2008, complying with Section 17D-1-403, Utah Code Annotated, 1953, as amended.

NOW, THEREFORE, notice is hereby given to all whom it may concern that the attached is a true and correct copy of the notice of annexation, referred to above, on file with the Office of the Lieutenant Governor pertaining to the GRAND COUNTY WATER CONSERVANCY DISTRICT, located in San Juan County, State of Utah.



IN TESTIMONY WHEREOF, I have hereunto set my hand and affixed the Great Seal of the State of Utah at Salt Lake City, this 13th day of October, 2008.


GARY R. HERBERT
Lieutenant Governor

Grand Water & Sewer Service Agency

3025 E Spanish Trail Rd
PO Box 1046
Moab, UT 84532
435-259-8121
435-259-8122 Fax

Mark Sovine
Manager/Operator

OPERATING COMMITTEE

Dan Pyatt (President)
Gary Wilson (V
President)
John Hartley
Mike Holyoak
Jerry McNeely
Rex Tanner

FORMING BOARDS:

SVW&SID

Gary Wilson (Ch)
Lance Christie (V.Ch)
John Hartley (Treas)
Mike Holyoak (Clerk)
Tom Stengel

GCWCD

Dan Pyatt (Ch)
Jerry McNeely (V.Ch)
Brian Backus
Rex Tanner

GCSSWD

Gary Wilson (Ch)
Lance Christie (V.Ch)
Kyle Bailey
Jerry McNeely
Tom Stengel

August 4, 2008

Office of the Lieutenant Governor
Attn: Danielle Murphy
PO Box 142220
Salt Lake City, UT 84114

Re: Annexation three San Juan County Parcels

Dear Danielle,

Enclosed please find a copy of the resolutions by the Grand County Water Conservancy District and the Grand County Special Service Water District and an aerial map of the annexed properties. If you have any questions or need any further information, please do not hesitate to call me at the number below.

Sincerely,



Dana Van Horn
Assistant to Manager/Operations
435-259-8121
gwssa.dana@frontiernet.net

Received

OCT 09 2008

Gary R. Herbert
Lieutenant Governor

**Grand County Water Conservancy District
RESOLUTION 2008-07-31(a)**

WHEREAS, by petitions dated June 3, 2008, from Grand County Council and June 2, 2008 from the San Juan County Commission, to the Board of Trustees, Grand County Water Conservancy District, the Board of Trustees was requested to annex into the District certain lands located in San Juan County, near Moab, Utah; and

WHEREAS, the lands that are proposed for annexation are more fully described as:

Parcel 1 (27S22E014200):

SECTION 1 T27S R22E SE ¼ NW ¼ (40 AC. M/L)

Parcel 2 (26S22E358402):

SECTION 35 T26S R22E: BEG. 2354.9 FT. W. & 660 FT. N. OF SE COR.
SECTION 35 T26SR22E, TH W. 285.1 FT; TH N. 330 FT; TH E. 29.2
FT; TH S 37°54' E 418.3 FT. TO BEG (1.1 AC M/L)

Parcel 3 (26S22E358401):

SECTION 35 T26S R22E: BEG. 2099 FT. W. & 330 FT. N. OF SE COR.
SECTION 35 T26S R22E, TH W. 541 FT; TH N. 330 FT; TH E. 285.1 FT;
TH S 37°54'E 418.3 FT. TO BEG (3.12 AC. M/L)

WHEREAS, the Board of Trustees, after notice, held a public hearing on June 26, 2008 on the petition.

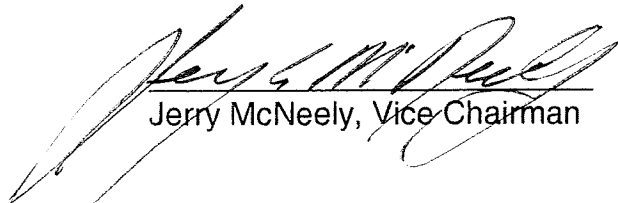
NOW THEREFORE, be it resolved as follows:

That the Board of Trustees of the Grand County Water Conservancy District hereby approves the request to annex into the District the three parcels as described above and depicted on the attached maps.

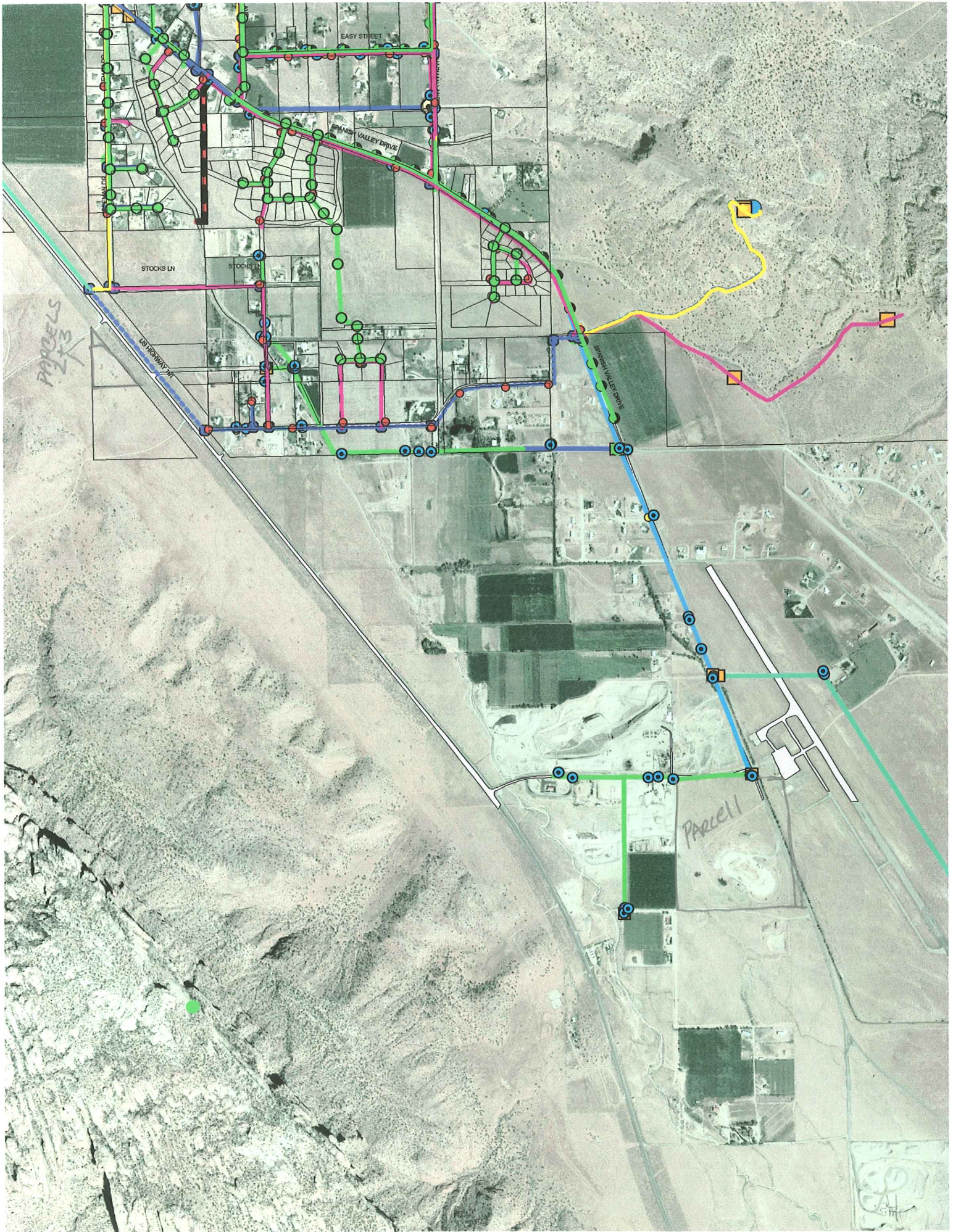
Passed and approved this 31st day of July 2008.



Dan Pyatt, Chairman



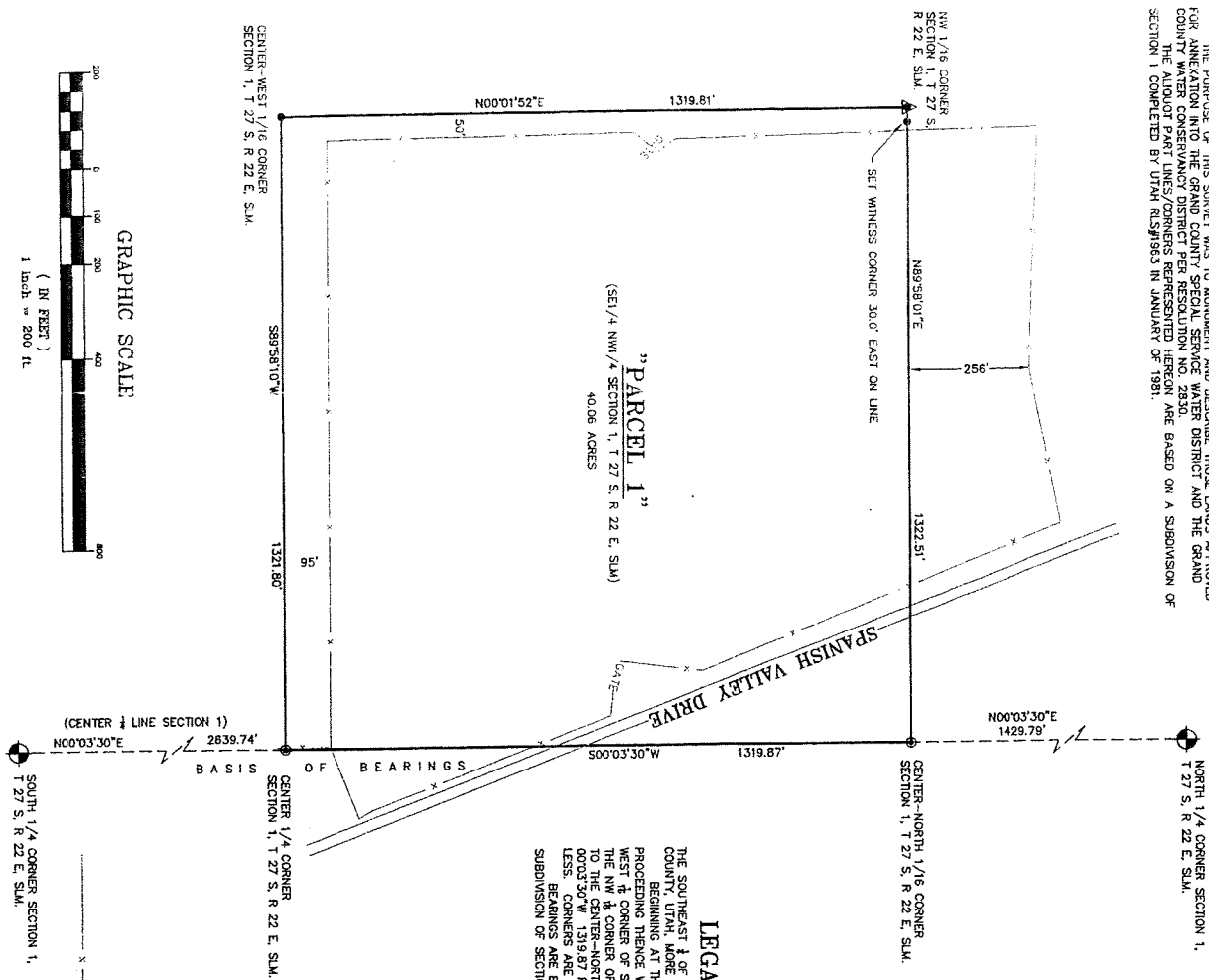
Jerry McNeely, Vice Chairman



A RECORD OF SURVEY &
ANNEXATION MAP OF LANDS TO THE
GRAND COUNTY SPECIAL SERVICE WATER DISTRICT AND THE
GRAND COUNTY WATER CONSERVANCY DISTRICT

SURVEYORS' NARRATIVE

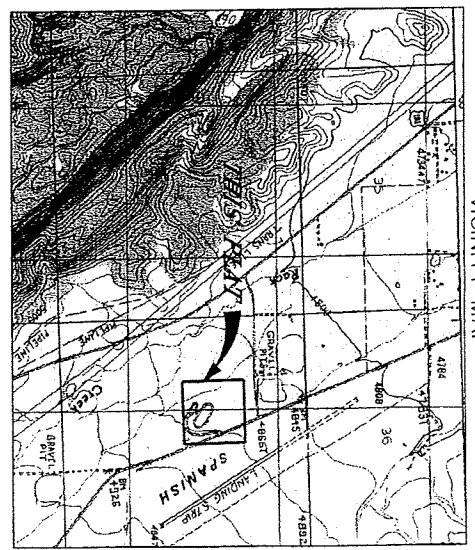
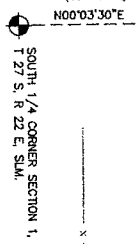
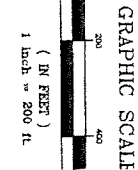
THE PURPOSE OF THIS SURVEY WAS TO MONUMENT AND DESCRIBE THOSE LANDS APPROVED FOR ANNEXATION INTO THE GRAND COUNTY SPECIAL SERVICE WATER DISTRICT AND THE GRAND COUNTY WATER CONSERVANCY DISTRICT PER RESOLUTION NO. 2830 OF THE BOARD OF COUNTY COMMISSIONERS OF GRAND COUNTY, UTAH. THE ALIQUOT PART LINES/CORNERS REPRESENTED HEREON ARE BASED ON A SUBDIVISION OF SECTION 1 COMPLETED BY UTAH RLS#1983 IN JANUARY OF 1981.



LEGAL DESCRIPTION "PARCEL 1"

THE SOUTHWEST 1/4 OF SECTION 1, T. 27 S., R. 22 E., SLM, SAN JUAN COUNTY, UTAH, MORE PARTICULARLY DESCRIBED AS FOLLOWS: 27 S. R. 22 E. SLM, AND BEGINNING AT THE CENTER 1/4 CORNER OF S. 89°58'10\"/>

- LEGEND**
- FOUND BRASS CAP MONUMENT
 - SET 5/8\"/>
 - FOUND 5/8\"/>
 - ▲ SET P-K NAIL WITH WASHER IN PAVED SURFACE
 - EXISTING FENCE LINE



APPROVED BY GRAND COUNTY

SHARMAK, GRAND COUNTY CLERK
 Dina Gu...
 COUNTY CLERK
 COUNTY ATTORNEY

SURVEYOR'S CERTIFICATE

I, TIMOTHY M. KEOGH, DO HEREBY CERTIFY THAT I AM A REGISTERED SURVEYOR IN THE STATE OF UTAH AND I HAVE PERSONALLY CONDUCTED THIS SURVEY AND THE STANDARDS AND PROCEDURES I HAVE FOLLOWED IN THIS SURVEY ARE TRUE AND CORRECT.

DATE: Sept 15 08
 TIMOTHY M. KEOGH
 REGISTERED SURVEYOR
 STATE OF UTAH

KEOGH LAND SURVEYING

45 EAST CENTER STREET
 MOAB, UTAH 84032